



MONTHLY MEMBERSHIP PROGRESS REPORT

District 20 Y1

Results as of: 6/30/2017

GMT: OPEN

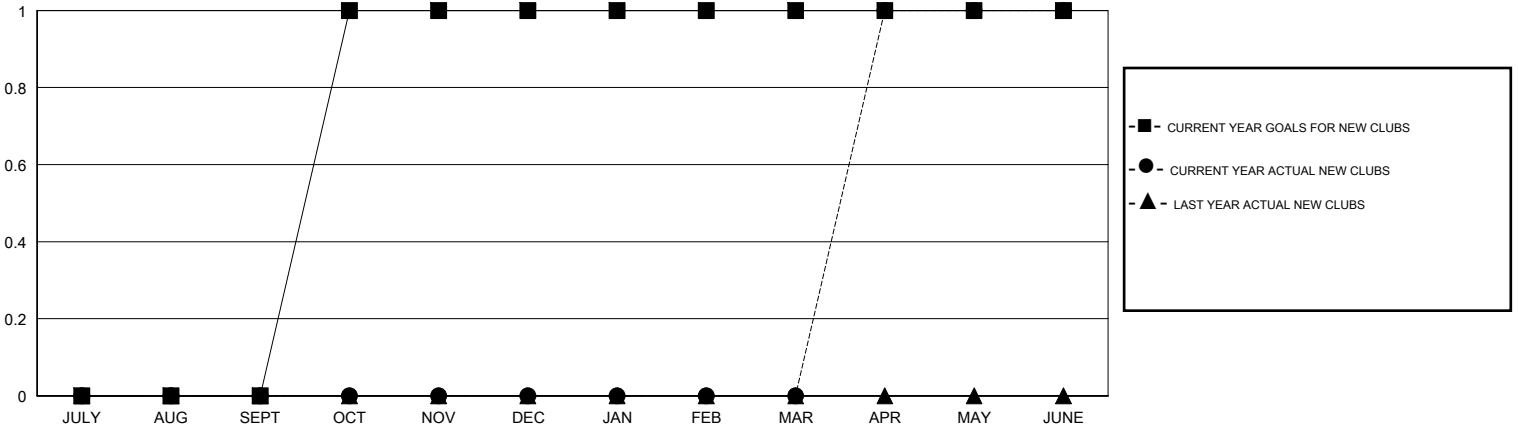
LOCATION NEW YORK

GMT CA

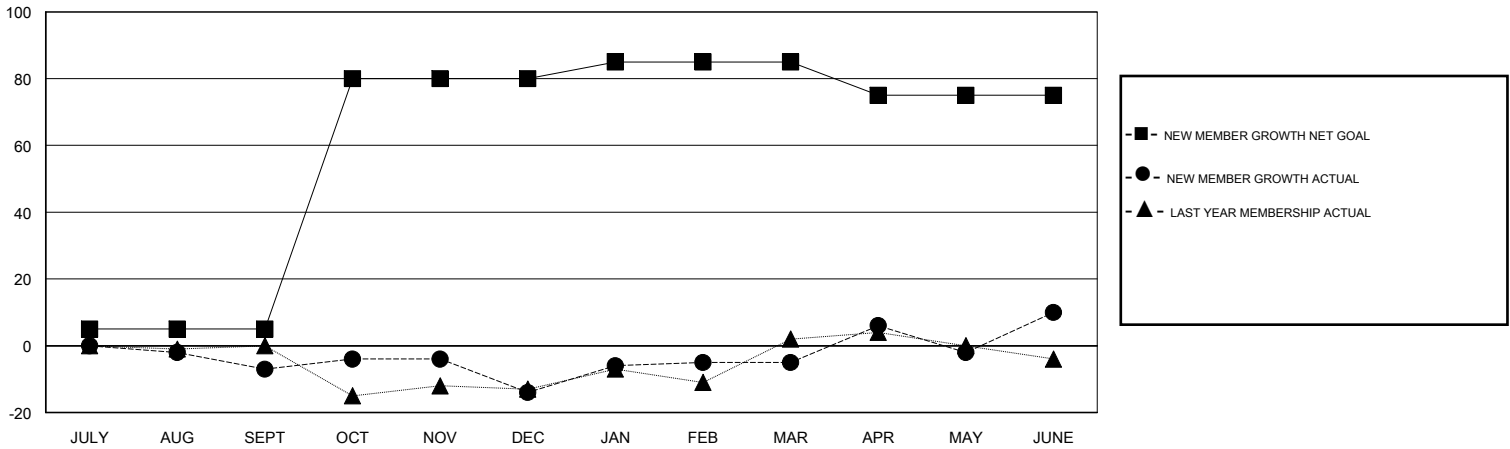
Clubs			
RESULTS FOR 2016-2017			
QUARTER	NEW CLUB GOAL	NEW CLUBS	DROPPED CLUBS
JULY/AUG/SEPT	0	0	0
OCT/NOV/DEC	1	0	0
JAN/FEB/MAR	0	0	0
APR/MAY/JUNE	0	1	0

Members			
RESULTS FOR 2016-2017			
QUARTER	NEW MEMBER GROWTH NET GOAL (not reinstated or transfers)	NEW MEMBER GROWTH ACTUAL (not reinstated or transfers)	DROPPED MEMBERS ACTUAL (including transfers)
JULY/AUG/SEPT	5	16	23
OCT/NOV/DEC	75	21	28
JAN/FEB/MAR	5	27	18
APR/MAY/JUNE	-10	58	43

GOALS AND ACTUAL NEW CLUBS CUMULATIVE



GOALS AND ACTUAL MEMBERS CUMULATIVE



DROPPED CLUBS: 0	31 CLUBS OF 45 ADDED 1 OR MORE NEW MEMBERS	<u>GENDER DISTRIBUTION</u>	
DROPPED MEMBERS		MALE	823 (71.13%)
DECEASED	25	FEMALE	334 (28.87%)
CLUB CANCELLED	0	TOTAL FAMILY UNIT MEMBERS	199
OTHER	87	FAMILY MEMBERS PAYING HALF DUES	103
TOTAL	112	CLICK HERE FOR CUMULATIVE MEMBERSHIP DATA	